



MOBILE BARRIERS

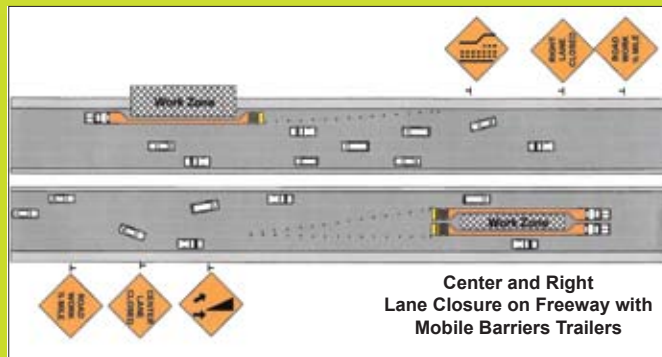


WINNER
2009 ATSSA
INNOVATION
AWARD

The Mobile Barriers Trailer (MBT-1)

42' to over 100' of Mobile Work Zone Protection. Modular. Efficient. Interchangeable right/left configurations. FHWA Accepted at TL-2 & TL-3 under both NCHRP 350 & new MASH criteria.

Crash Video, Report, FHWA Acceptance & Other Information at www.mobilebarriers.com



Center and Right Lane Closure on Freeway with Mobile Barriers Trailers



MOBILE BARRIERS & Design are protected under various US and International laws, including without limitation. Reg. No. 3,569,572, Pat. No. 7,572,022 and various other issued & pending applications. © 2009 Mobile Barriers LLC. All rights reserved.