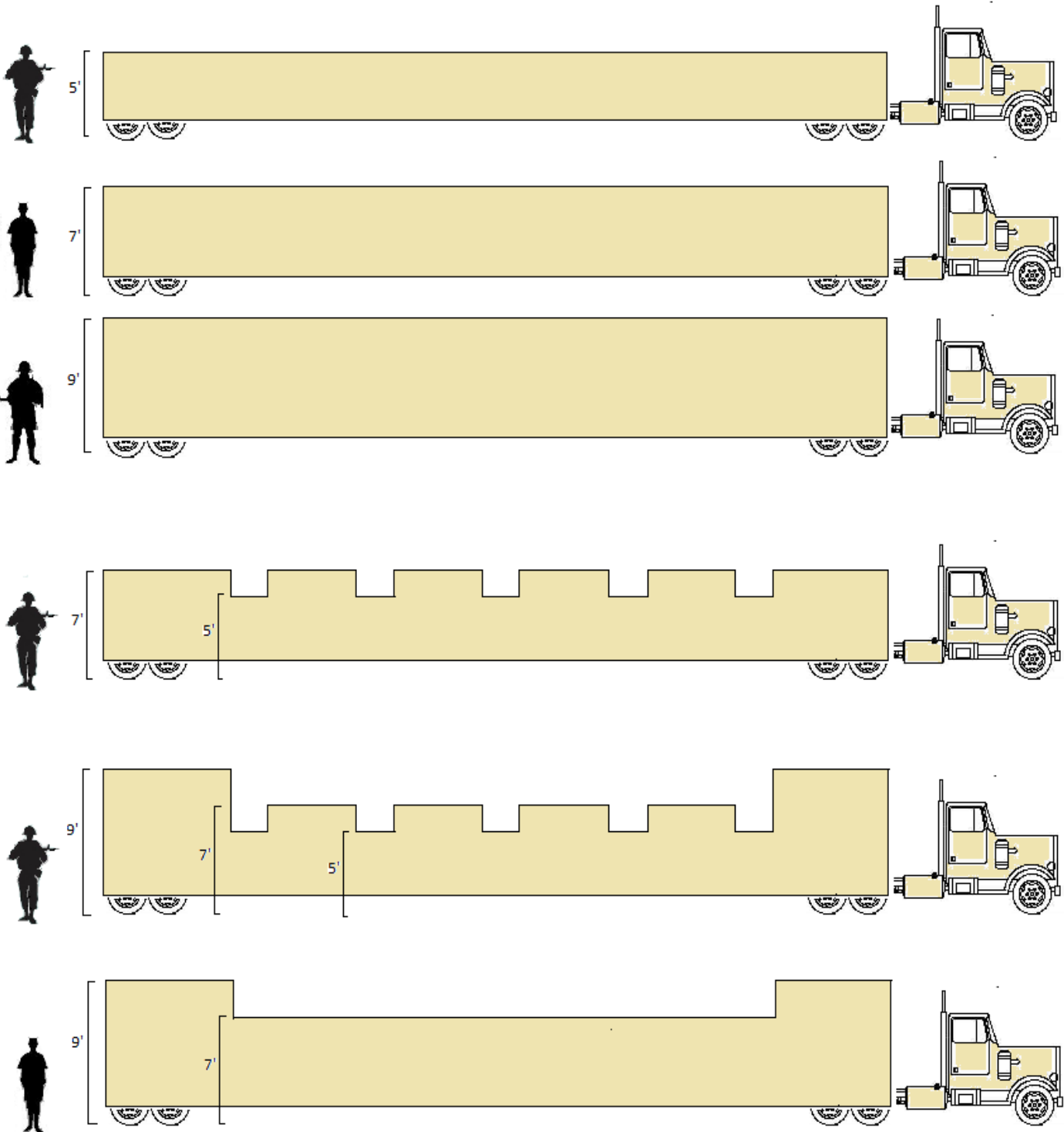


Basic Height Configurations

(Presented on two 21' axle platforms plus one 20' wall section = 62' Protective Length Configuration)



The standard protective wall height on a MBT-1m is 5' with the option of adding up to 4' of additional protective wall height creating between 5' to 9' of protective barrier from the ground up. The wall height can also be crenelated (*i.e.* create rectangular gaps or crenellations of 5' and 7' intervals) and/or varied (*e.g.* 9' high walls protecting the axle platforms with 7' or 5' high walls shielding the rest of the barrier). The front and back ends of the MBT-1m can also be enclosed.

Basic Length Configurations



Two 21' axle platforms = 42' of protection.



Two 21' Axle Platforms + One 10' Wall Section = 52' of Protective Length.



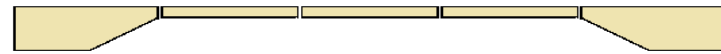
Two 21' Axle Platforms + One 20' Wall Section = 62' of Protective Length.



Two 21' Axle Platforms + One 20' Wall Section + One 10' Wall Section = 72' of Protective Length.



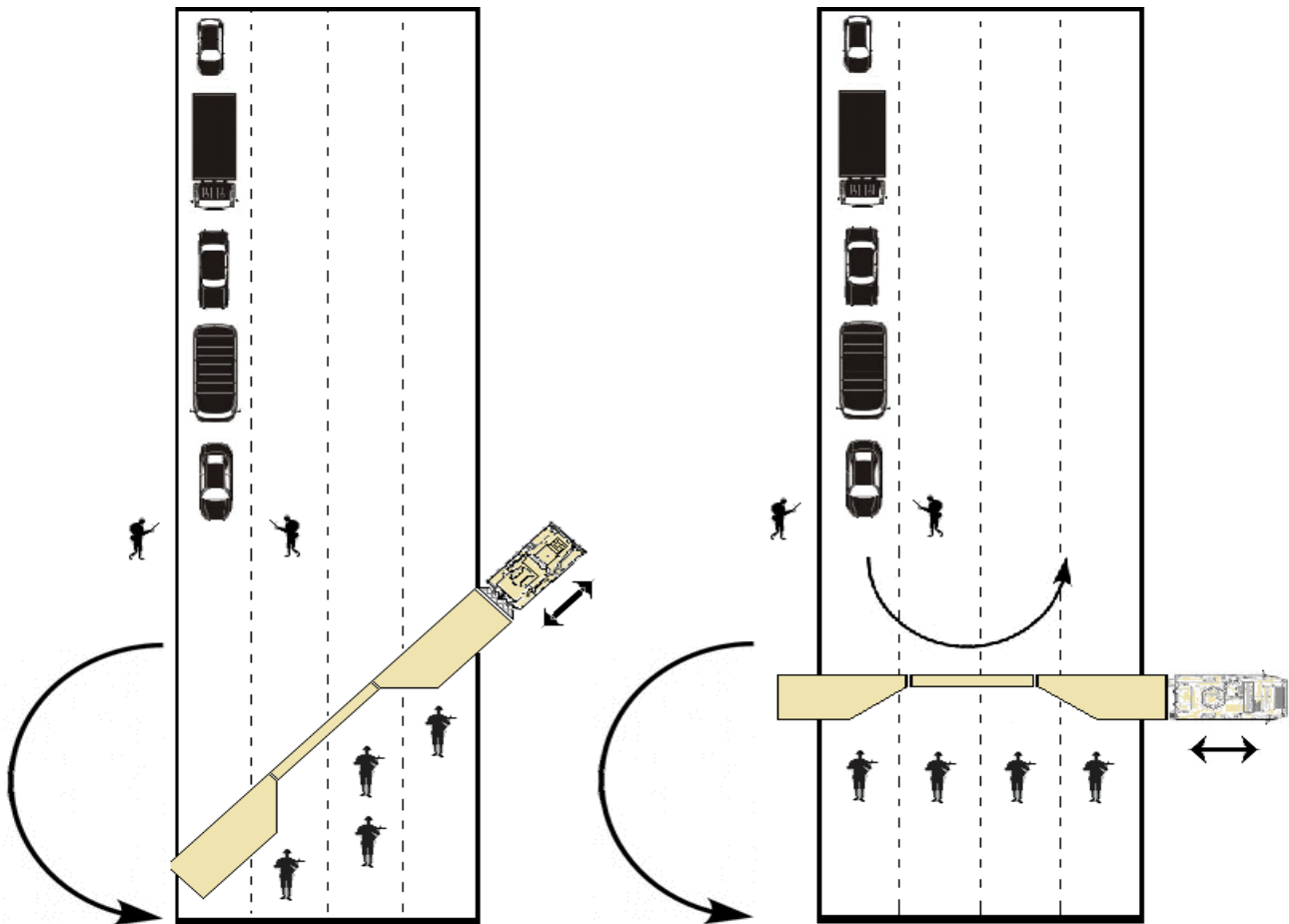
Two 21' Axle Platforms + Two 20' Wall Sections = 82' of Protective Length.



Two 21' Axle Platforms + Three 20' Wall Section = 102' of Protective Length.

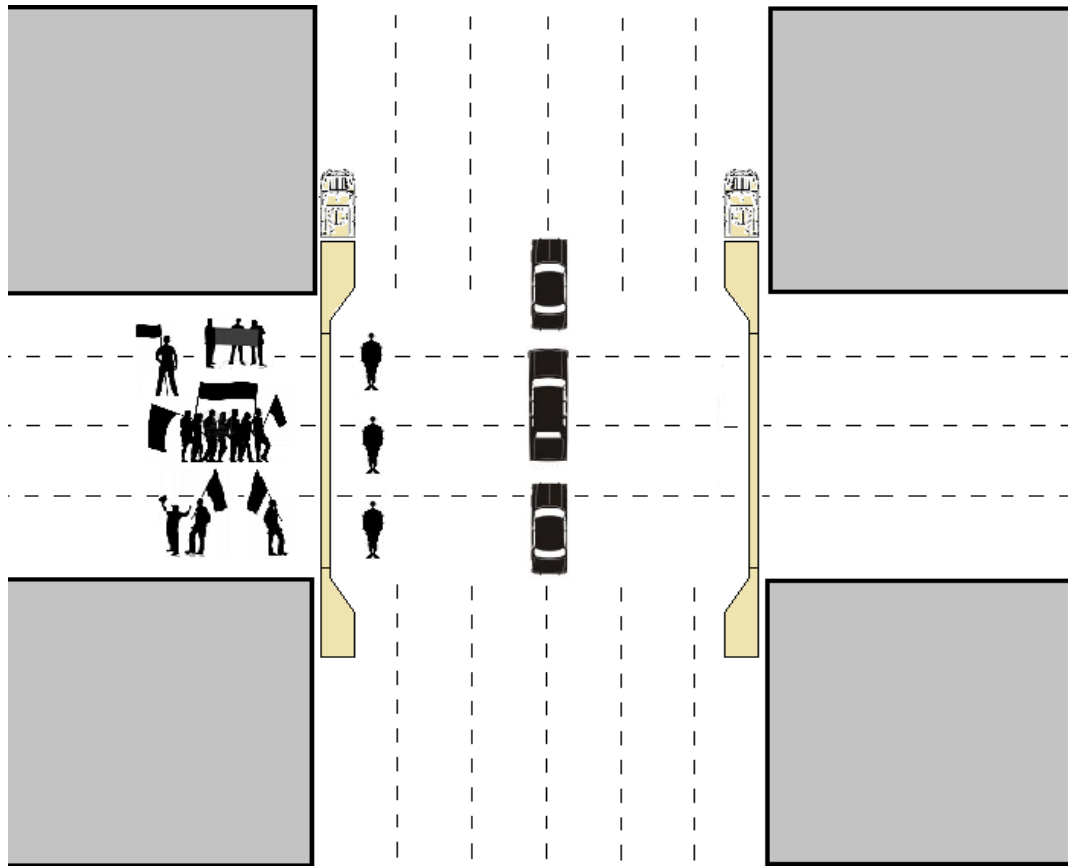
Basic Traffic Control – Mobile Inspection Configuration

Rapid deployment delivers immediate protection at tactical control points (e.g. snap TCPs, road blocks, bridge, tunnel, port and/or city quarantines, etc.). Below presents two MBT-1ms in 62' protective length configurations as deployed by a MRAP and APC.



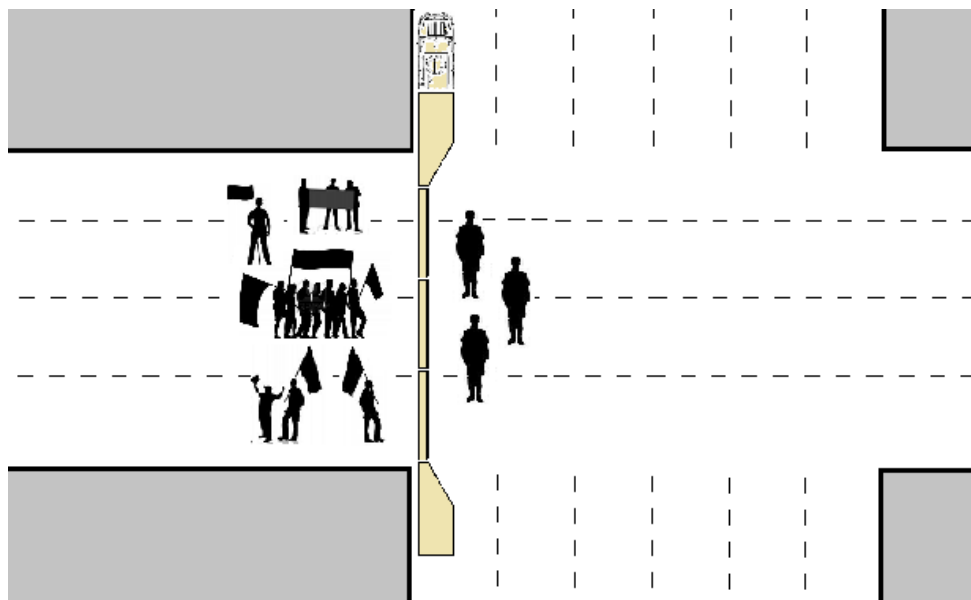
[Renderings Not to Scale]

Basic Rapid Crowd Control – Motorcade/Parade Configuration



[Renderings Not to Scale]

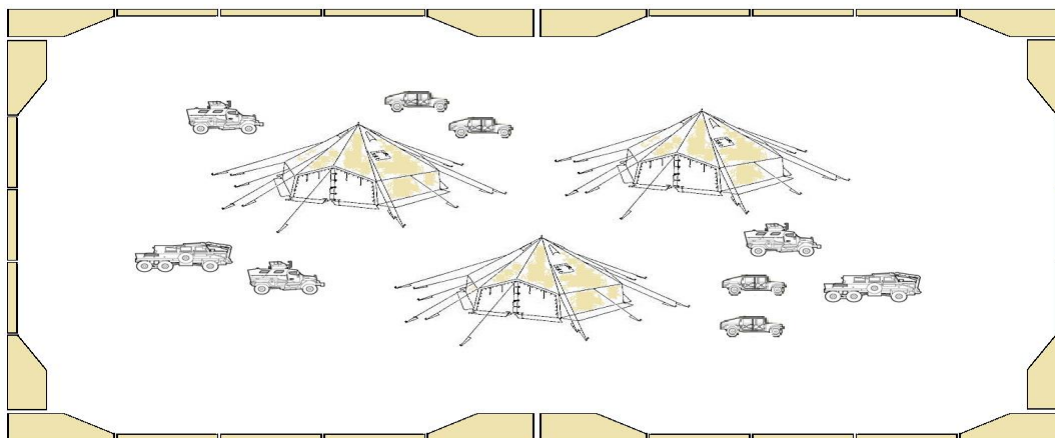
Basic Rapid Crowd Control - Barricade Configuration



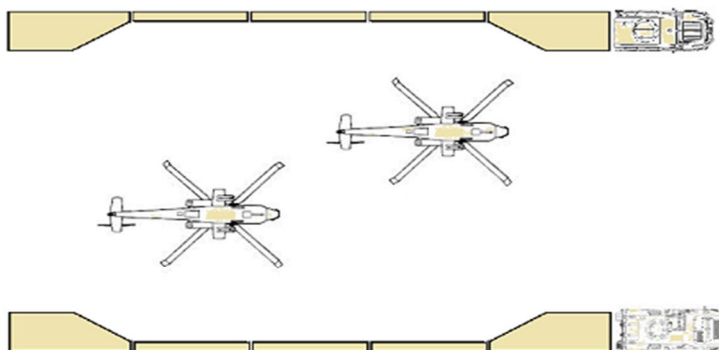
[Renderings Not to Scale]

Basic Camp Envelopment – Six MBT-1m Configuration

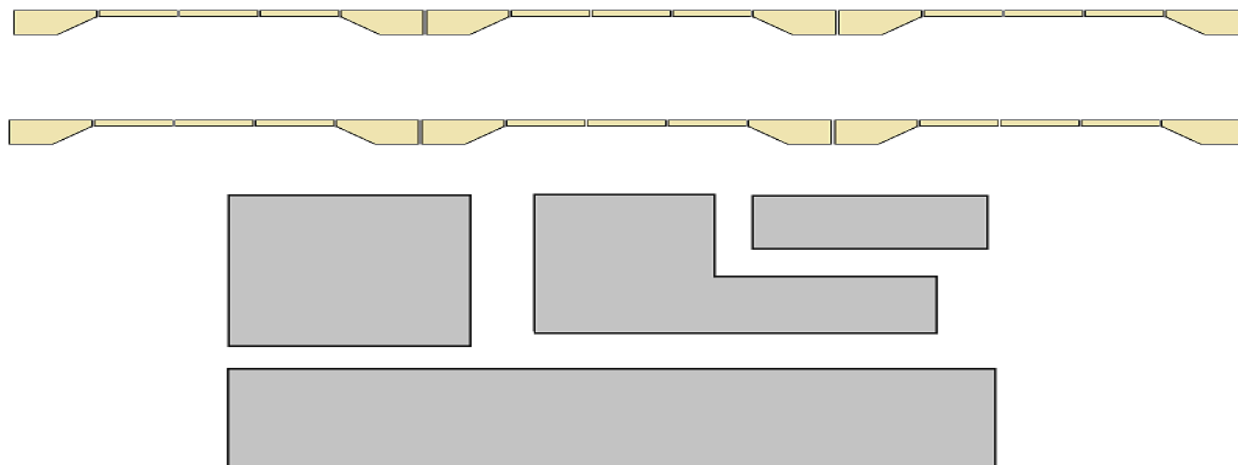
Multiple MBT-1ms can be configured in a variety of positions and utilized together (e.g. to envelop a structure, to envelop a position, to create multiple layers of protection, to secure a facility, to secure a crash or construction site, to barricade a roadway, to quarantine a city block, to contain or repel a crowd, etc.).



Basic Rapid Position Envelopment – Two Side Configuration

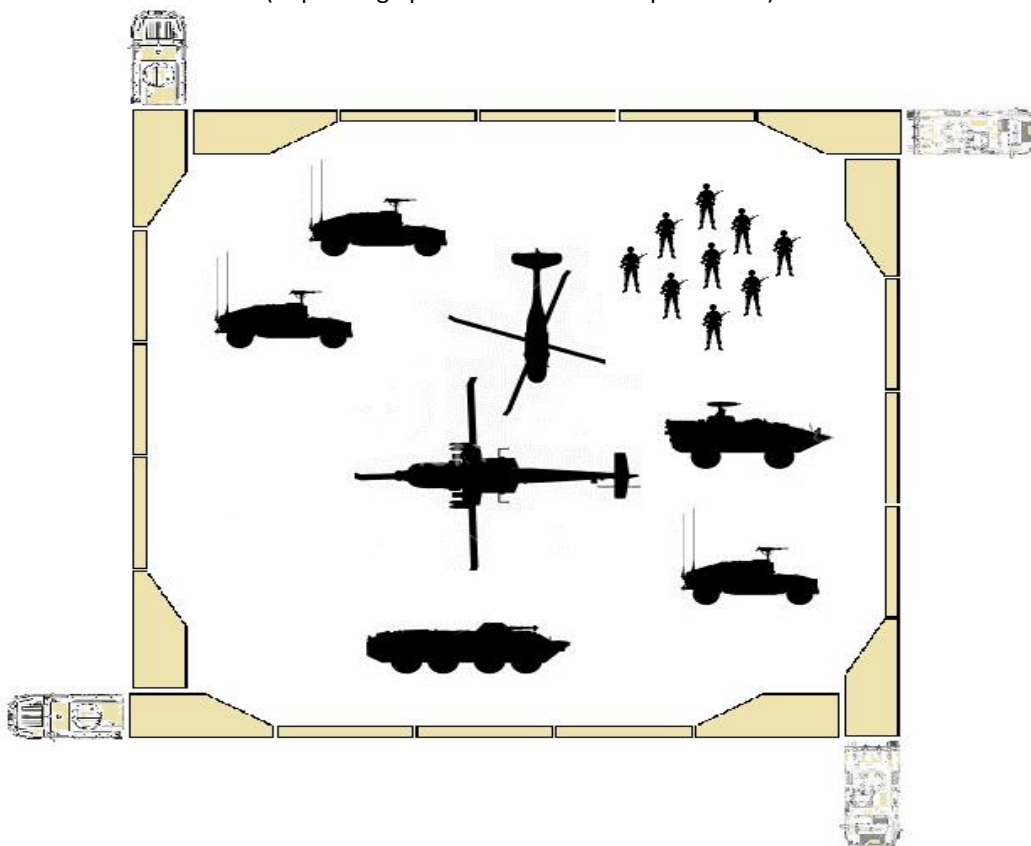


Basic Two-Tier Structure Defense Configuration



Basic Rapid Scene Envelopment – Four Side Configuration

The MBT-1m is modularly expandable providing anywhere from 42' to 102' in length of overall protection (depending upon the situational requirements).



[Renderings Not to Scale]

For more information, pictures, models and videos visit: <http://www.mobilebarriers.com/security-defense-photos.html>

Point of Contact:

David A. Palladino
Executive Vice President, Security & Defense / General Counsel
Mobile Barriers LLC

24918 Genesee Trail Road
Golden, Colorado 80401
ph. 303.946.0957

e-mail: david@mobilebarriers.com

website: <http://www.mobilebarriers.com/index.htm>