

Basic Length Configurations



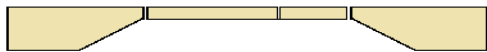
Two 21' axle platforms = 42' of protection.



Two 21' Axle Platforms + One 10' Wall Section = 52' of Protective Length.



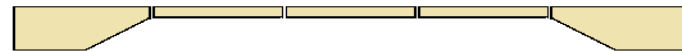
Two 21' Axle Platforms + One 20' Wall Section = 62' of Protective Length.



Two 21' Axle Platforms + One 20' Wall Section + One 10' Wall Section = 72' of Protective Length.



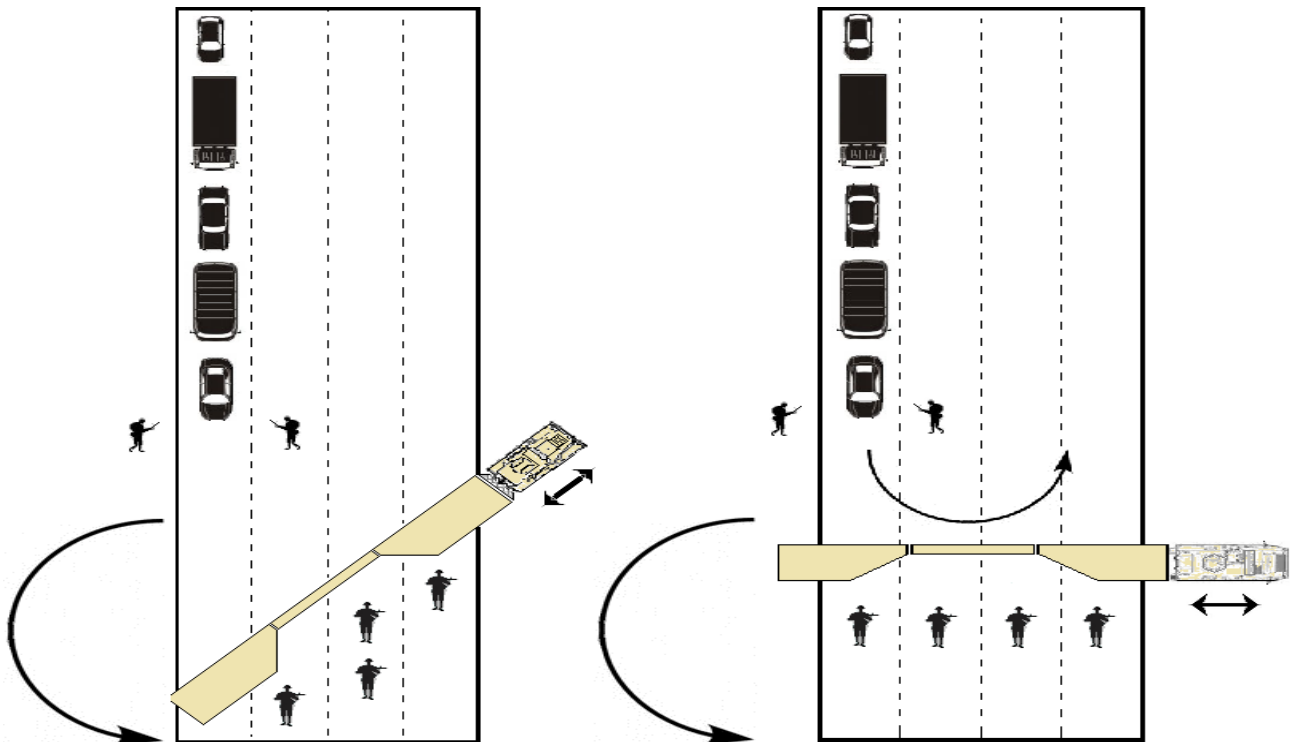
Two 21' Axle Platforms + Two 20' Wall Sections = 82' of Protective Length.



Two 21' Axle Platforms + Three 20' Wall Section = 102' of Protective Length.

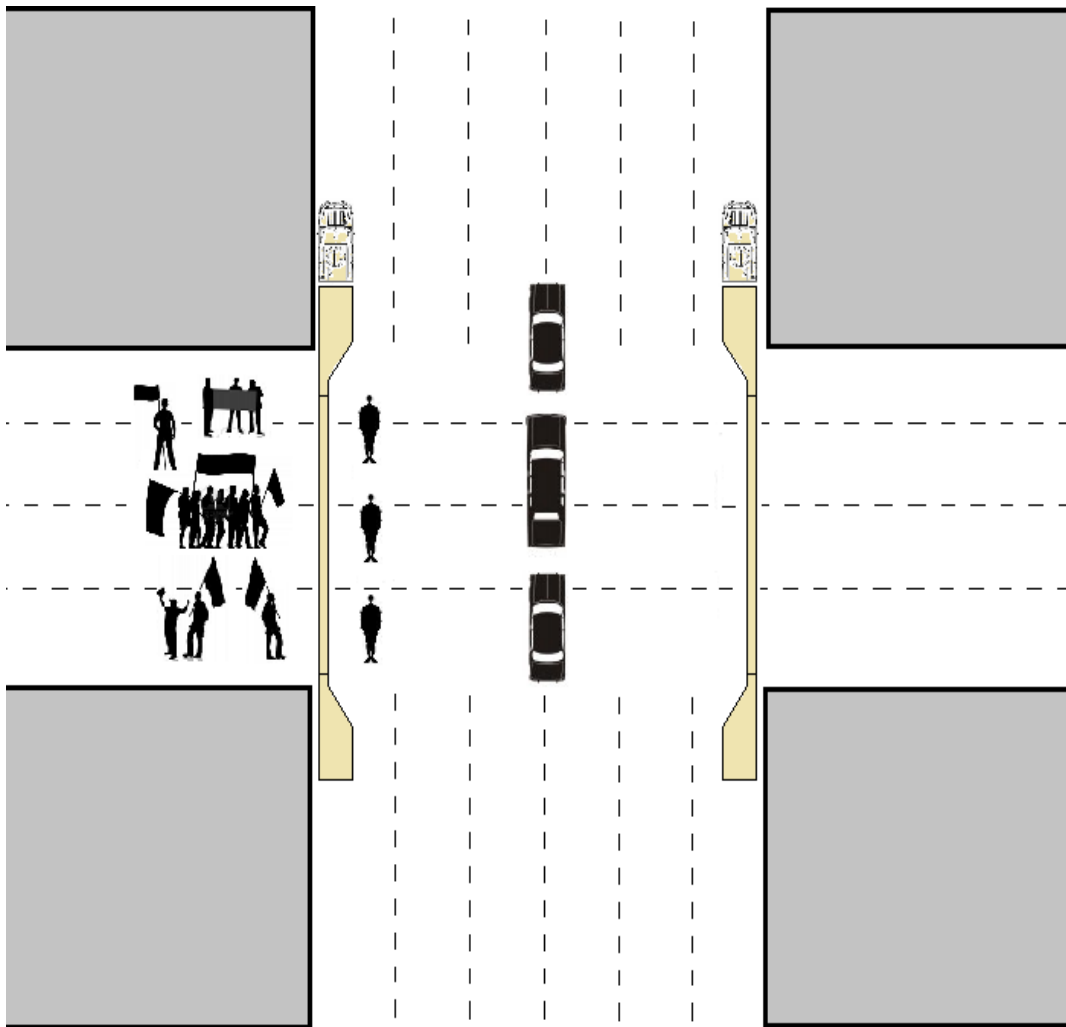
Basic Traffic Control – Mobile Inspection Configuration

Rapid deployment delivers immediate protection at tactical control points (e.g. traffic control points, road blocks, bridge, tunnel, port and/or city quarantines, etc.). Below presents two MBT-1s in 62' protective length configurations.



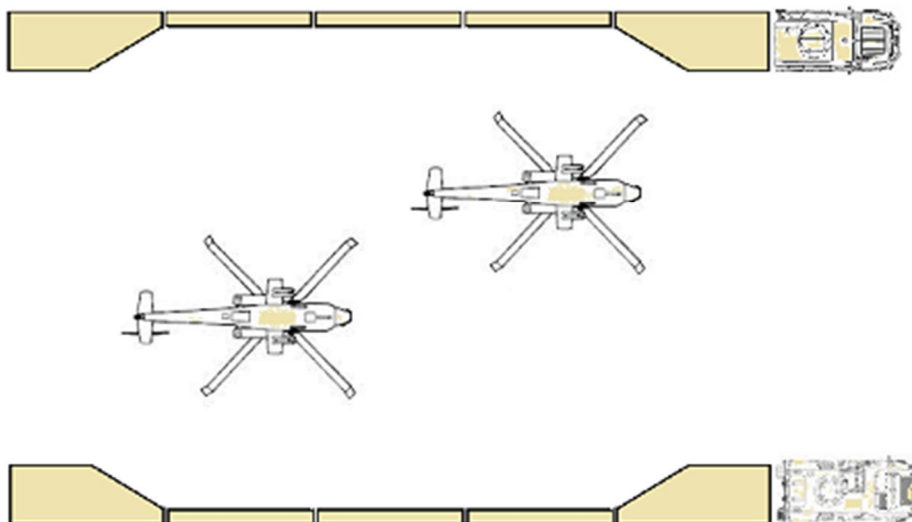
[Renderings Not to Scale]

Basic Rapid Crowd Control – Motorcade/Parade Configuration



[Renderings Not to Scale]

Basic Rapid Position Envelopment – Two Side Configuration



[Renderings Not to Scale]