

Appendix A – Mobile Barriers Trailer... SwRI Test # MBT-1 (metric)

Mobile Barriers LLC 24918 Genesee Trail Road, Golden, Colorado 80401 ph. 303.526.5995 fx 303.526.9959

Overview

View as assembled with three wall sections



Shortened configuration prepared for transport w/ wall sections atop adjoining platforms.



Maximum Overall Length (with 3 wall sections): 102' (31 m)

Minimum Overall Length (no wall sections installed): 42' (12.8 m)

(lengths exclusive of tractor & TMA assembly)

Width: 100" (254 cm)

Weight: 65,000 lbs with tractor and misc accompaniments (29,483 kg)

Breakdown: Platforms and rear axel assembly ("caboose") – 20,000 lbs (9,072 kg)

Wall sections – 5,000 lbs/ea. (2268 kg/ea)

Counterweight ("Ballast") – 5,000 lbs per wall section (2,268 kg/ea)

Tractor and accompaniments – approx 20,000 lbs (9,072 kg)

Clearance: 9-12" (+/- 1") depending on configuration (23-30 cm)

Height to top of platforms: approx 5' (58" w/ 12" clearance) (147 cm w/ 30 cm clearance)

Height to top of visual barrier netting (if deployed): approx 9' (2.7 m)

Appendix A – Mobile Barriers Trailer... SwRI Test # MBT-1 (metric)

Mobile Barriers LLC 24918 Genesee Trail Road, Golden, Colorado 80401 ph. 303.526.5995 fx 303.526.9959

Overview (cont)...

Length of platforms: 21' ea (6.4 m/ea.)

Length of wall sections: 20' ea. (6.1 m/ea.)

Configuration options: Platform and caboose with 0-3 wall sections; Tractor can attach at either end for right or left configurations. Caboose located at end opposite tractor.

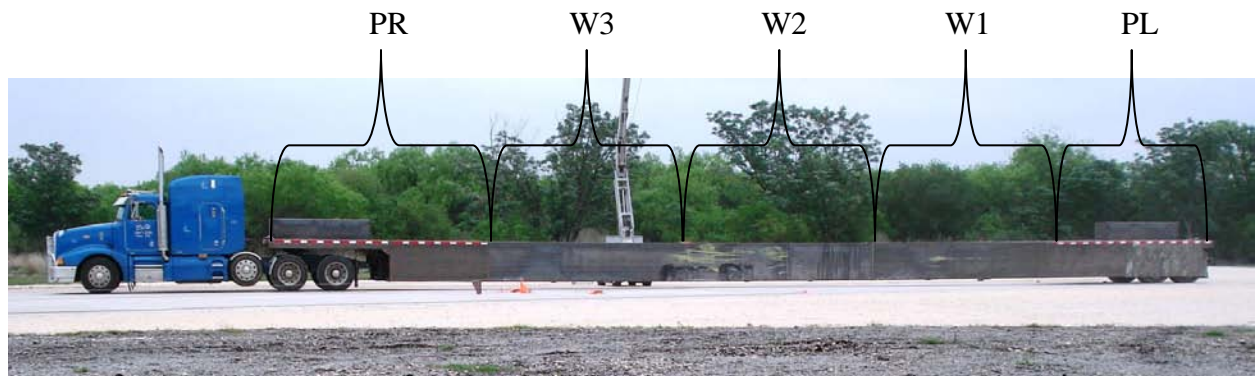
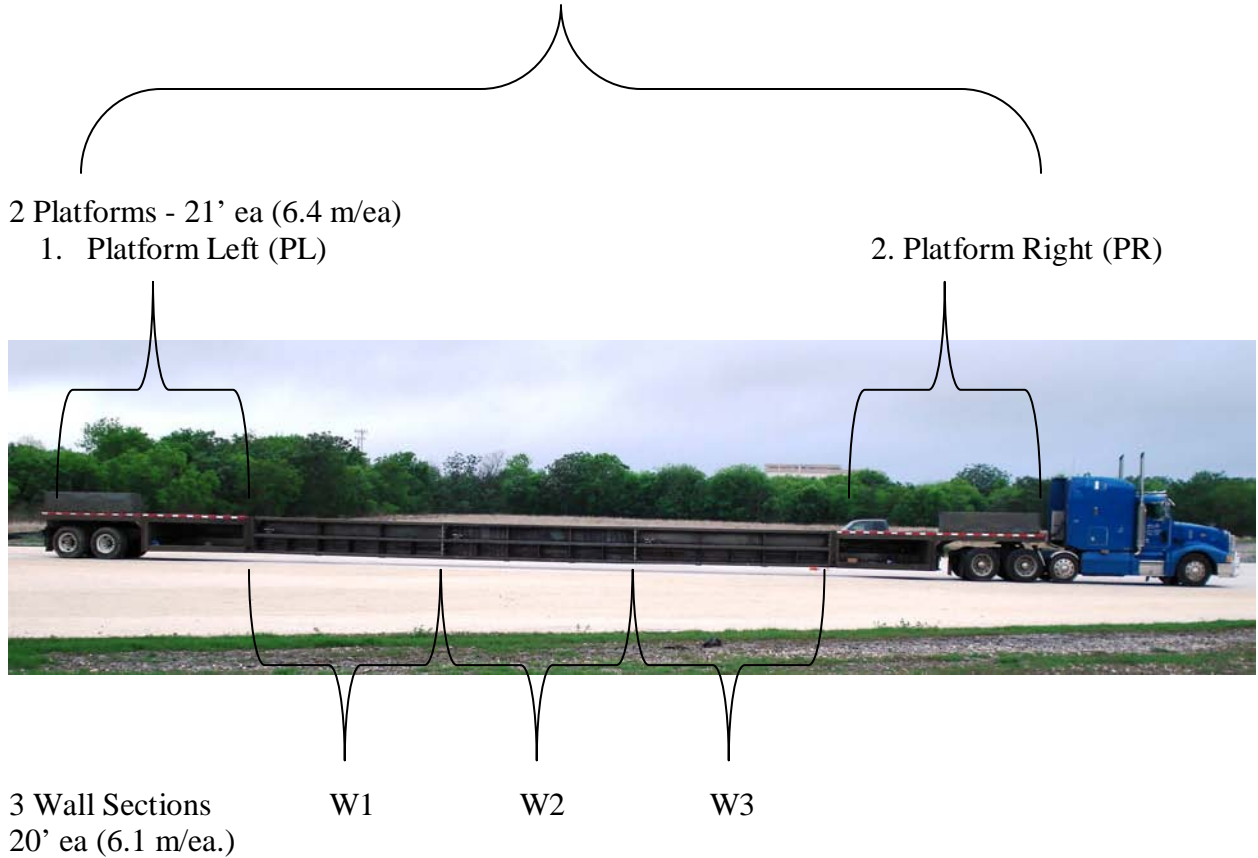
Must be used with an NCHRP 350 and/or MASH compliant TMA that has been tested and Accepted for usage at TL-2 or TL-3 levels as appropriate for applicable traffic speeds and deployment conditions (TMA not shown)

Appendix A – Mobile Barriers Trailer... SwRI Test # MBT-1 (metric)

Mobile Barriers LLC 24918 Genesee Trail Road, Golden, Colorado 80401 ph. 303.526.5995 fx 303.526.9959

Dimensions...

Maximum Overall Length with 3 wall sections: 102' (31 m)



Appendix A – Mobile Barriers Trailer... SwRI Test # MBT-1 (metric)

Mobile Barriers LLC 24918 Genesee Trail Road, Golden, Colorado 80401 ph. 303.526.5995 fx 303.526.9959

Dimensions (cont)...

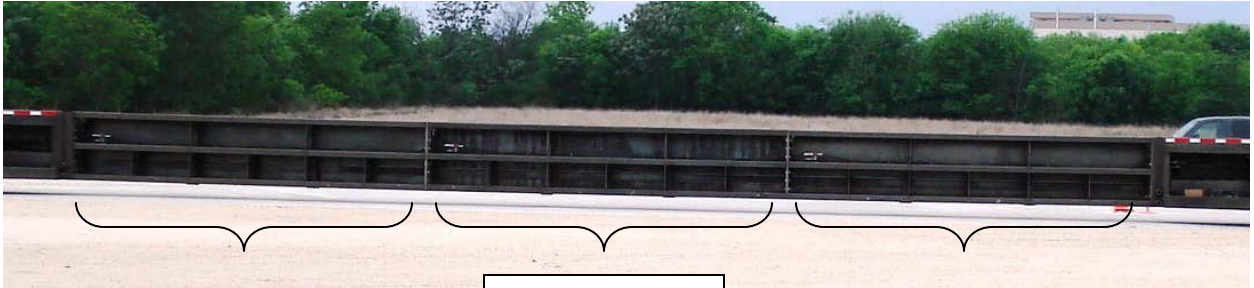
Trailer & Caboose (rear axel assembly) as seen from rear traffic side - wheel cover panel and TMA not shown. (license plate and splashguards blacked out)



Appendix A – Mobile Barriers Trailer... SwRI Test # MBT-1 (metric)

Mobile Barriers LLC 24918 Genesee Trail Road, Golden, Colorado 80401 ph. 303.526.5995 fx 303.526.9959

Wall construction...



Wall sections
20' ea (6.1 m/ea.)



Top, mid, and lower beams with lower channel – 46” height or 116 cm (55-58” or 140-147 cm overall height w/ 9-12” or 23-30 cm clearance)



Assembled
1x3” (25x75mm) Grade 8
Fine Thread Bolts



Preassembly as seen on end

Wall Width 24” (61 cm)

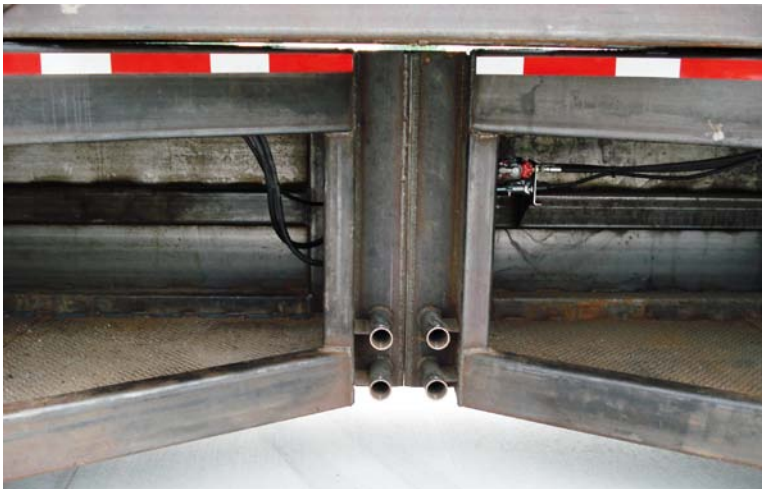
Appendix A – Mobile Barriers Trailer... SwRI Test # MBT-1 (metric)

Mobile Barriers LLC 24918 Genesee Trail Road, Golden, Colorado 80401 ph. 303.526.5995 fx 303.526.9959

Platform Construction...



Platforms connected and loaded for transport, shown open from work side.



Skeletal view.

